

Intramedullary Tumors

- Primary tumors – much more common

- Ependymoma
- Astrocytoma

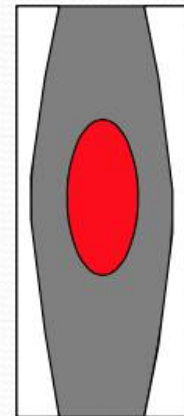


~ 90-95% of all intramedullary tumors

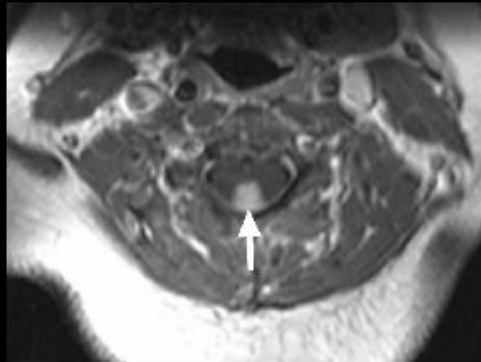
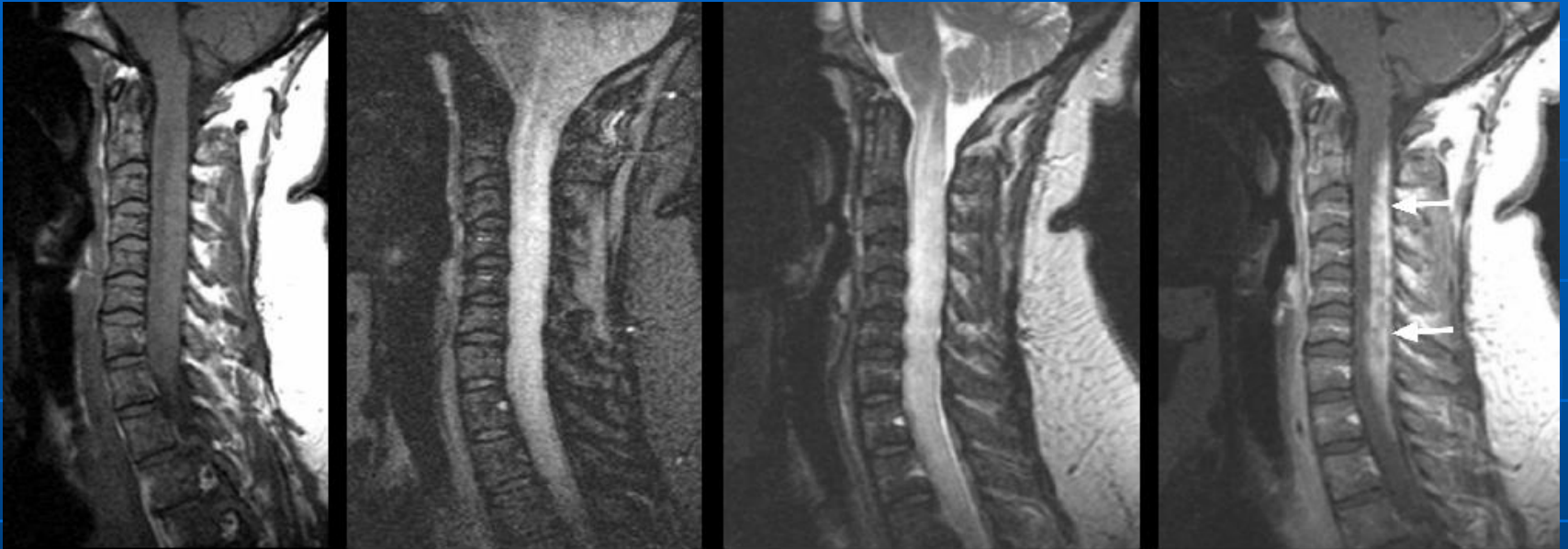
- Hemangioblastoma
- Subependymoma, Oligodendroglioma, Ganglioglioma (rare)

- Secondary tumors – metastases

- Lung, breast, renal, gastric
- Lymphoma, leukemia
- Melanoma



Sarcoidosis



Most common imaging finding is spinal cord widening.

Intramedullary and leptomeningeal lesion suggests sarcoid