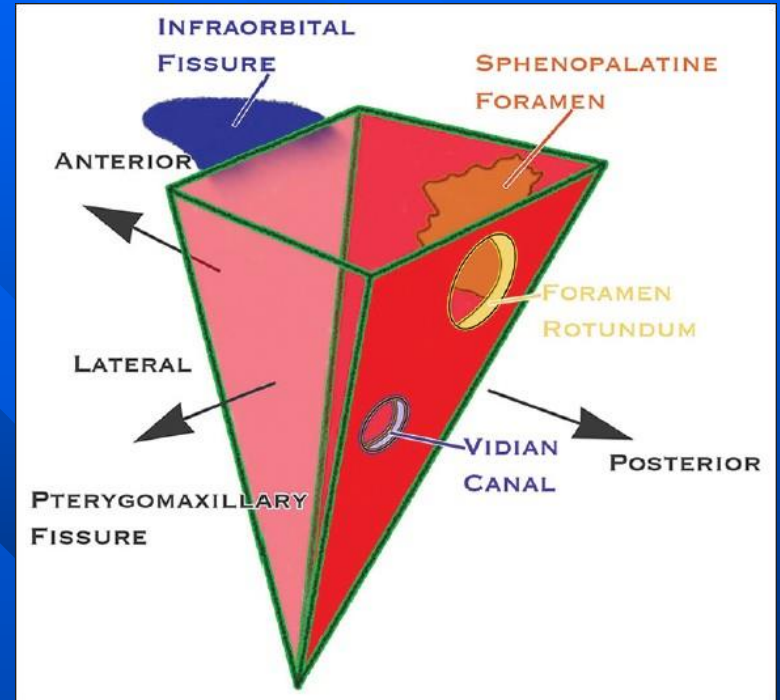
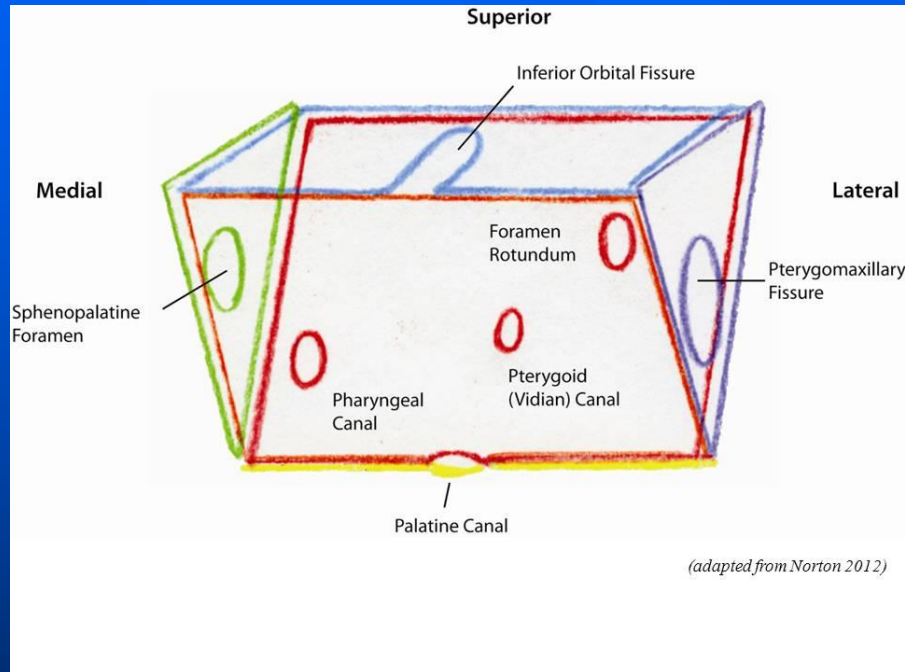
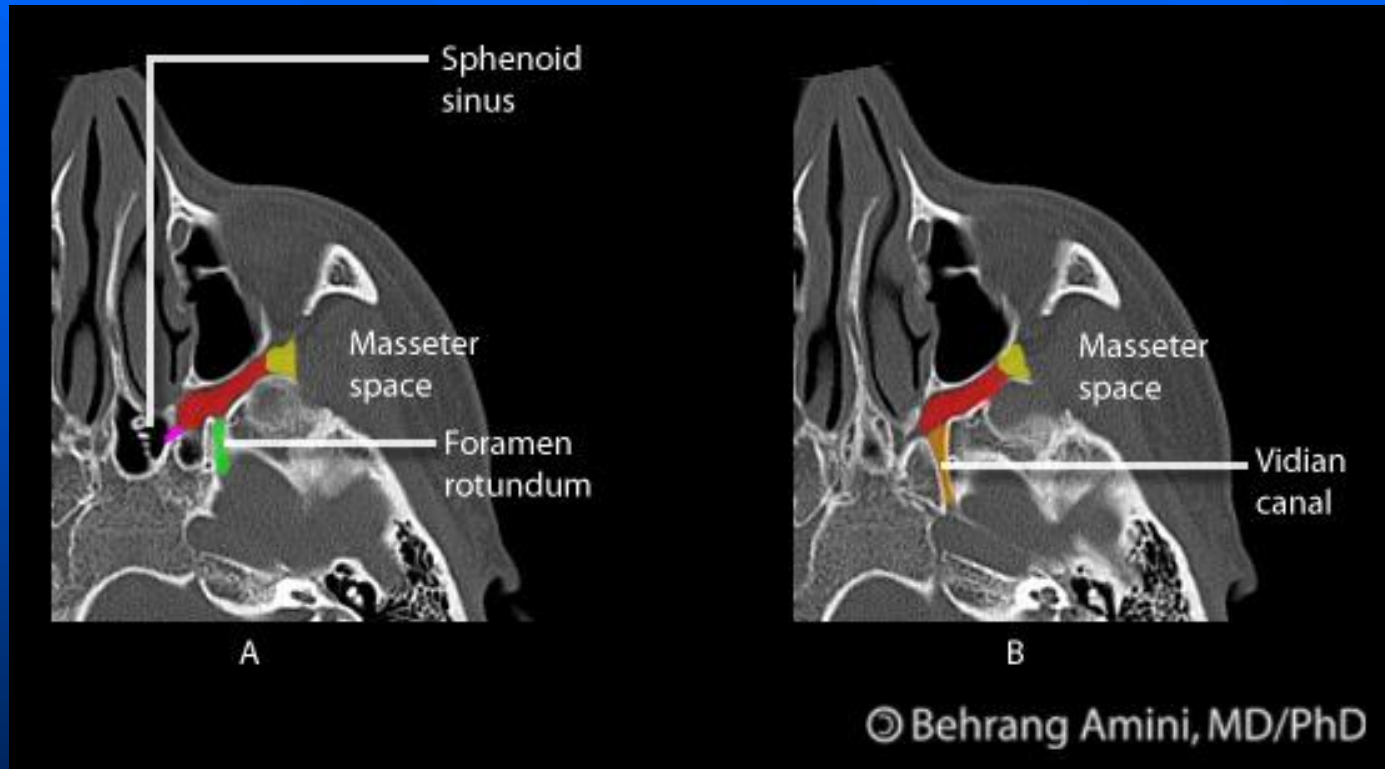


Pterygopalatine Fossa



Pterygopalatine Fossa



Pterygopalatine Fossa

- 3 dimensional box
- Pterygopalatine ganglion
- Maxillary nerve (CNV2) enters via foramen rotundum
- Distal internal maxillary artery enters via pterygomaxillary fissure

Clinical Importance

- PF serves as crossroads of deep face **Perineural tumor** from hard-soft palate may follow **palatine nerves** superiorly into PPF
- **Perineural tumor** from cheek skin, maxillary sinus or orbit may follow **infraorbital nerve** to PPF
- PPF tumor may access intracranial compartment via foramen rotundum or vidian canal