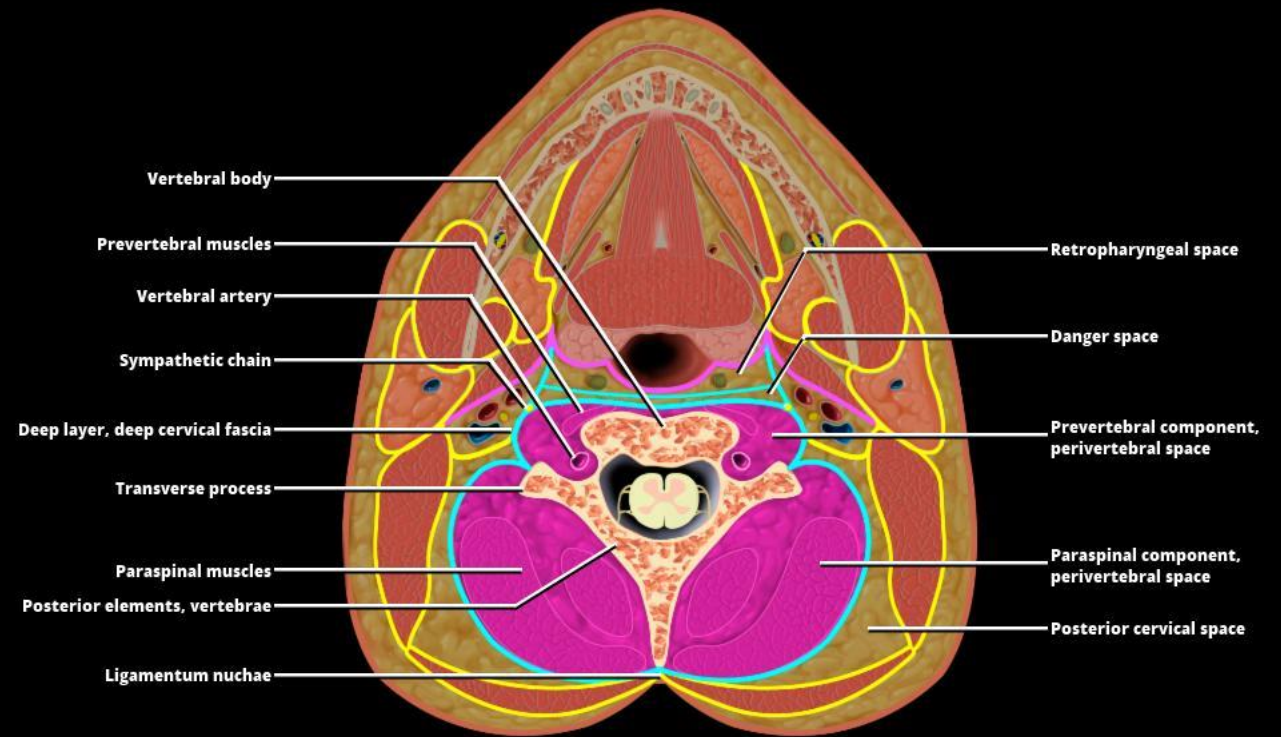


# Perivertebral Space

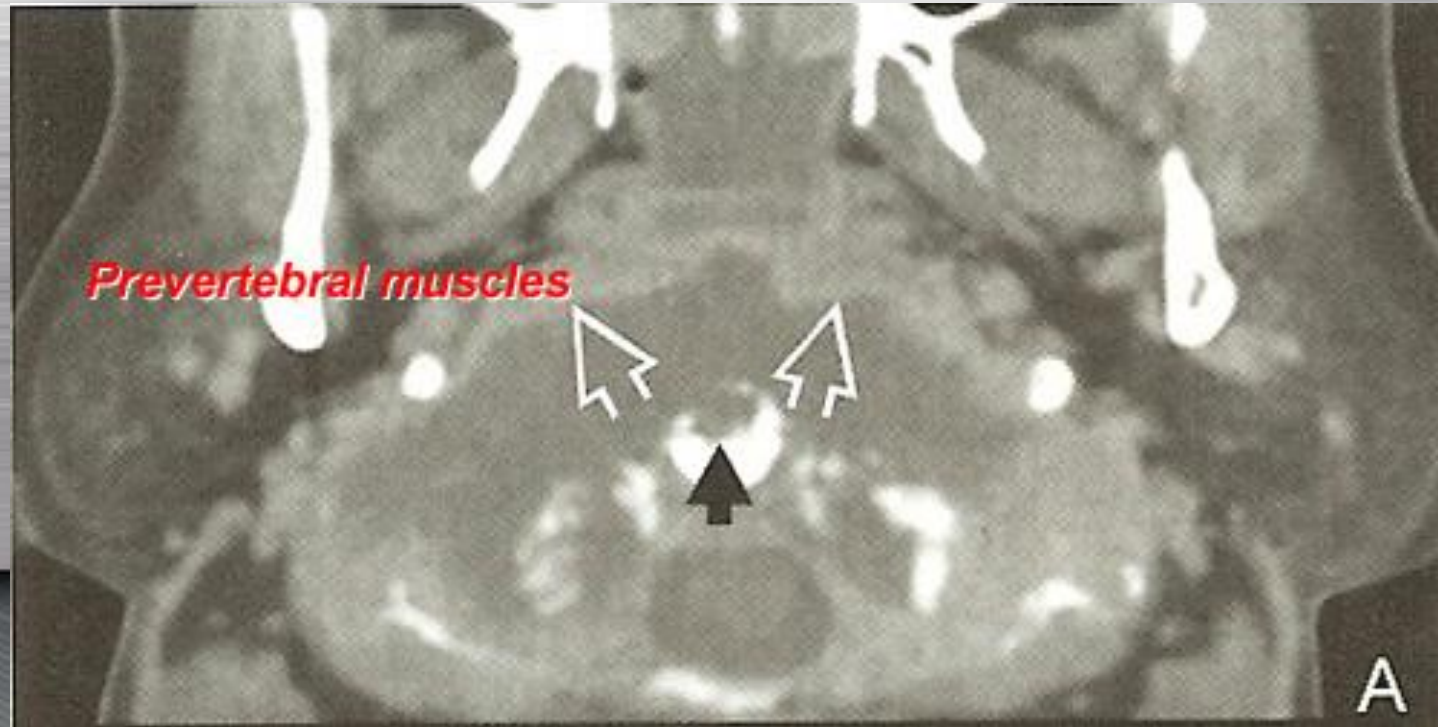
- Historically, term "prevertebral space" includes soft tissues behind vertebral column
- "PVS" terminology adopted to include all tissues under deep layer of deep cervical fascia (DL-DCF), both in front of & behind vertebral column
- Definitions
  - Cylindrical space surrounding vertebral column extending from skull base to upper mediastinum bounded by deep layer, deep cervical fascia subdivided into prevertebral & paraspinal components
  - PVS: Peri (Greek for around) vertebra

Axial graphic through the level of the oropharynx shows prevertebral and paraspinal components of the perivertebral space beneath the deep layer of deep cervical fascia. Notice this fascia curves medially to touch the transverse processes of the vertebrae, dividing the perivertebral space into prevertebral and paraspinal components. The danger and retropharyngeal spaces are anterior to the perivertebral space, while the posterior cervical space is lateral and posterior.





# Prevertebral Abscess from osteomyelitis



## Perivertebral Space-IH

- Benign lesions
  - Lymphangioma
  - Hemangioma
  - Osteophytes
  - Nodes
  - Lipoma, schwannoma, benign bone lesions

0:47