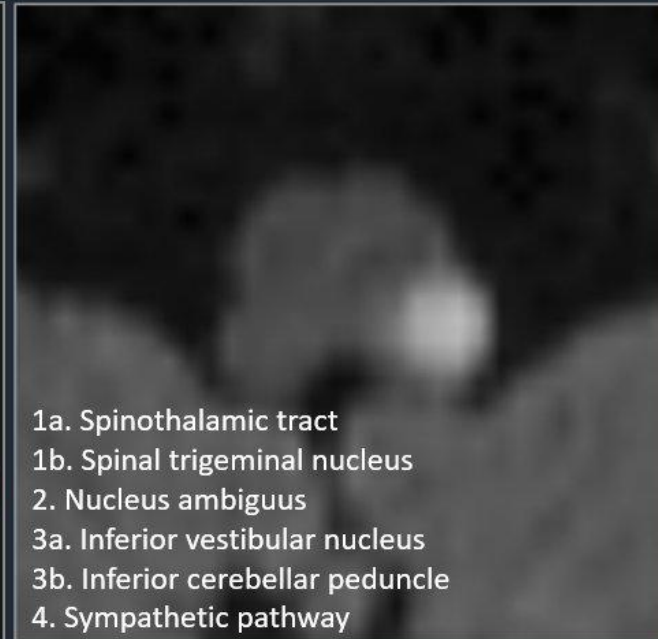
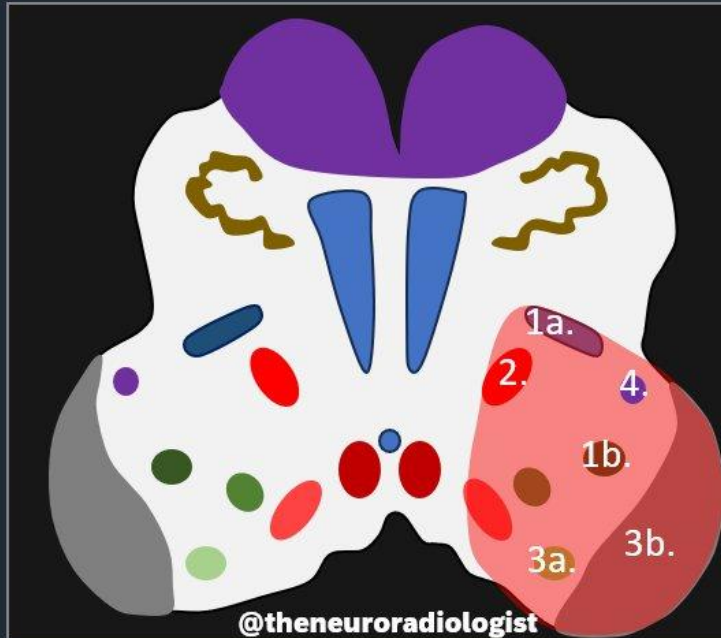


Wallenberg syndrome

(or “lateral medullary syndrome”)



- 1. Loss of temperature & pain sensation**
contralateral body (1a) - ipsilateral face (1b)
- 2. Ipsilateral bulbar muscle weakness**
Dysarthria, dysphonia, hoarseness, dysphagia...
- 3. Ipsilateral vestibulocerebellar symptoms**
Vertigo, nausea, nystagmus (3a); ipsilateral hemiataxia (3b)
- 4. Ipsilateral Horner syndrome**

Wallenberg syndrome

- Related to ischemia of the trigeminal nerve sensory nucleus leading to classic ipsilateral Horner's syndrome (ptosis, myosis, and anhydrosis) and
- Ipsilateral loss of facial sensation.
- Contralateral loss of pain and sensation from involvement of the spinothalamic track

Left vertebral artery dissection with lateral medullary infarction and Wallenberg's syndrome

