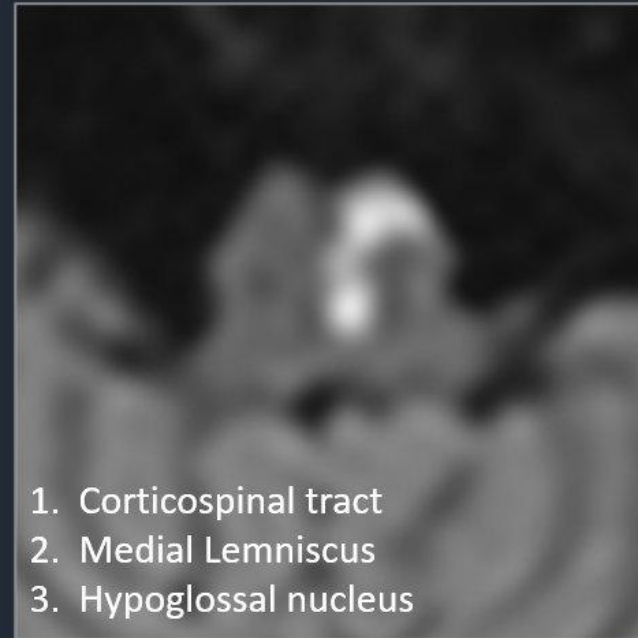
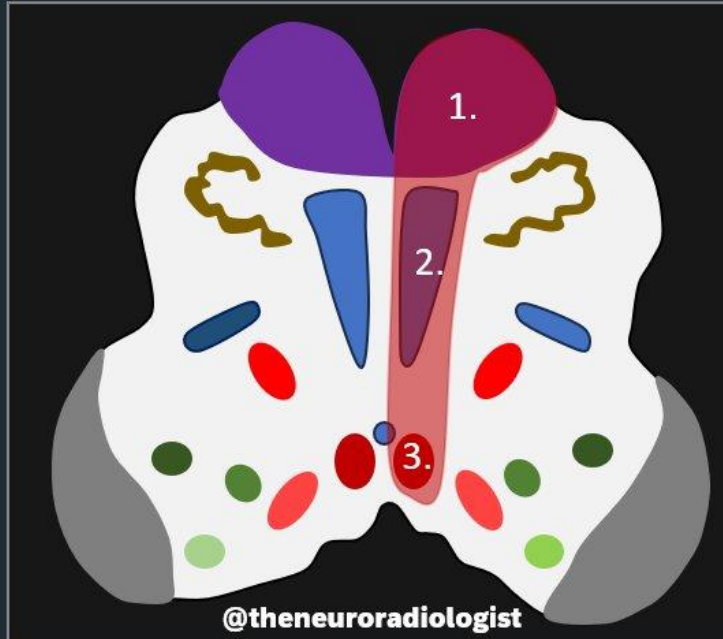


# Dejerine syndrome

*(or “medial medullary syndrome”)*



## 1. Contralateral hemiparesis leg & arm

*The face is spared; motor innervation face by corticobulbar tract and n. V en VII in the pons*

## 2. Contralateral hemisensory loss

*Vibration, proprioception & fine touch; face is spared*

## 3. Ipsilateral hypoglossal palsy