

Alberta stroke program early CT score (ASPECTS)

- Alberta stroke program early CT score (ASPECTS)
- 1 is a 10-point quantitative topographic CT scan score used for middle cerebral artery (MCA) stroke patients.
- It has also been adjusted for the posterior circulation (see below).

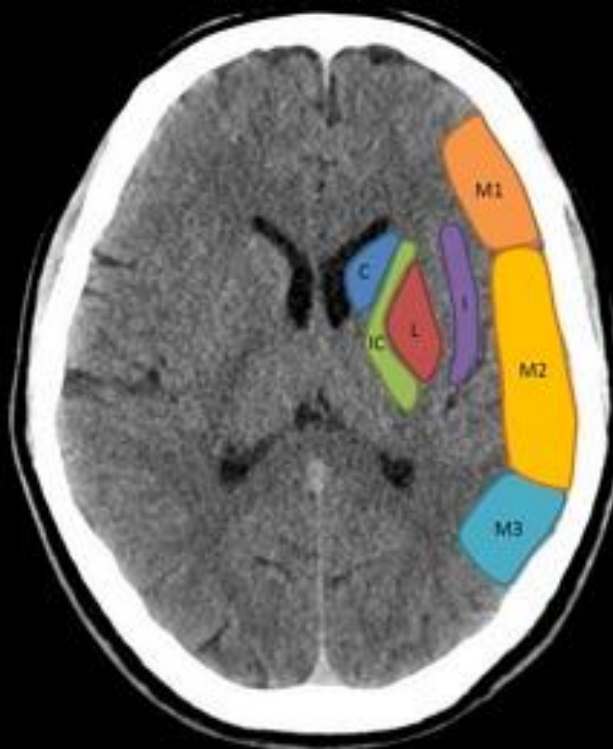
Scoring System

- 1 point is deducted from the initial score of 10 for every region involved:
- Caudate
- Putamen
- Internal capsule
- Insular cortex
- M1: "anterior MCA cortex," corresponding to the frontal operculum
- M2: "MCA cortex lateral to insular ribbon" corresponding to the anterior temporal lobe
- M3: "posterior MCA cortex" corresponding to the posterior temporal lobe
- M4: "anterior MCA territory immediately superior to M1"
- M5: "lateral MCA territory immediately superior to M2"
- M6: "posterior MCA territory immediately superior to M3"

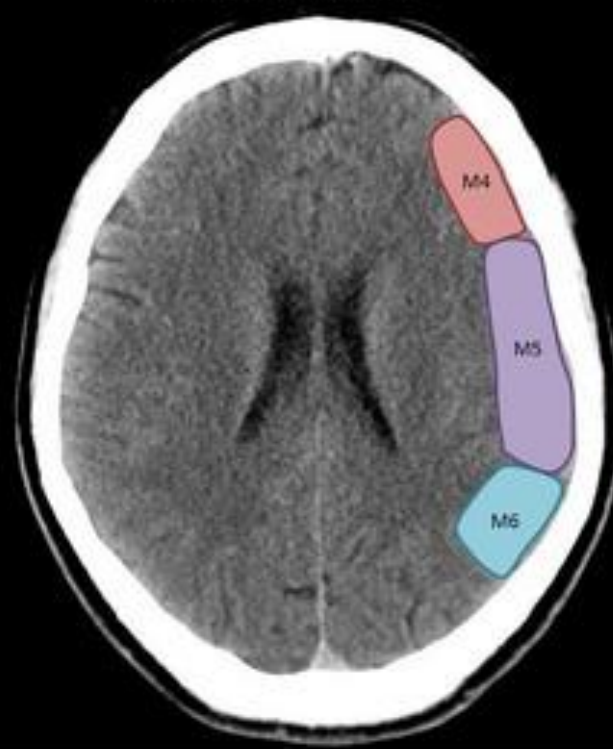
MCA

MCA Alberta stroke program early CT score (ASPECTS)

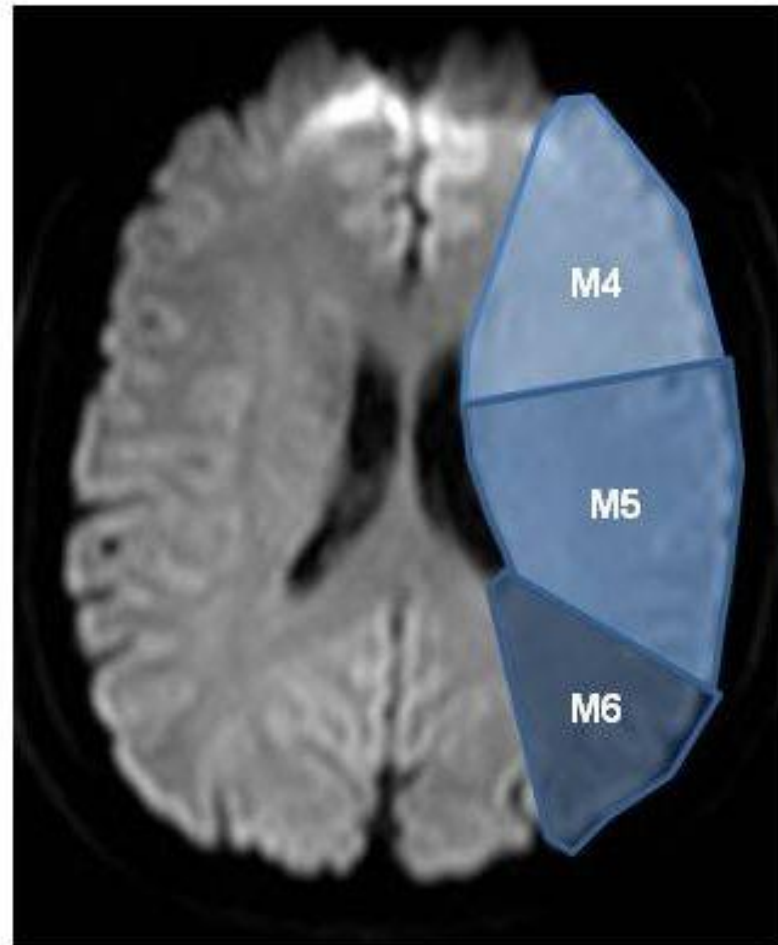
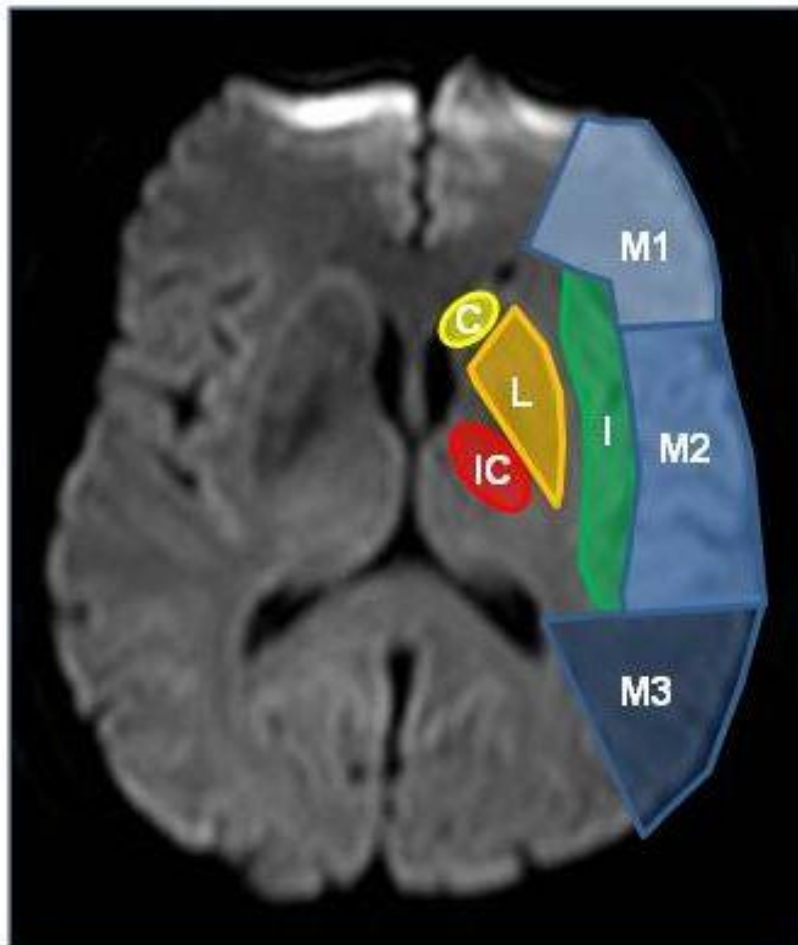
Basal ganglia level

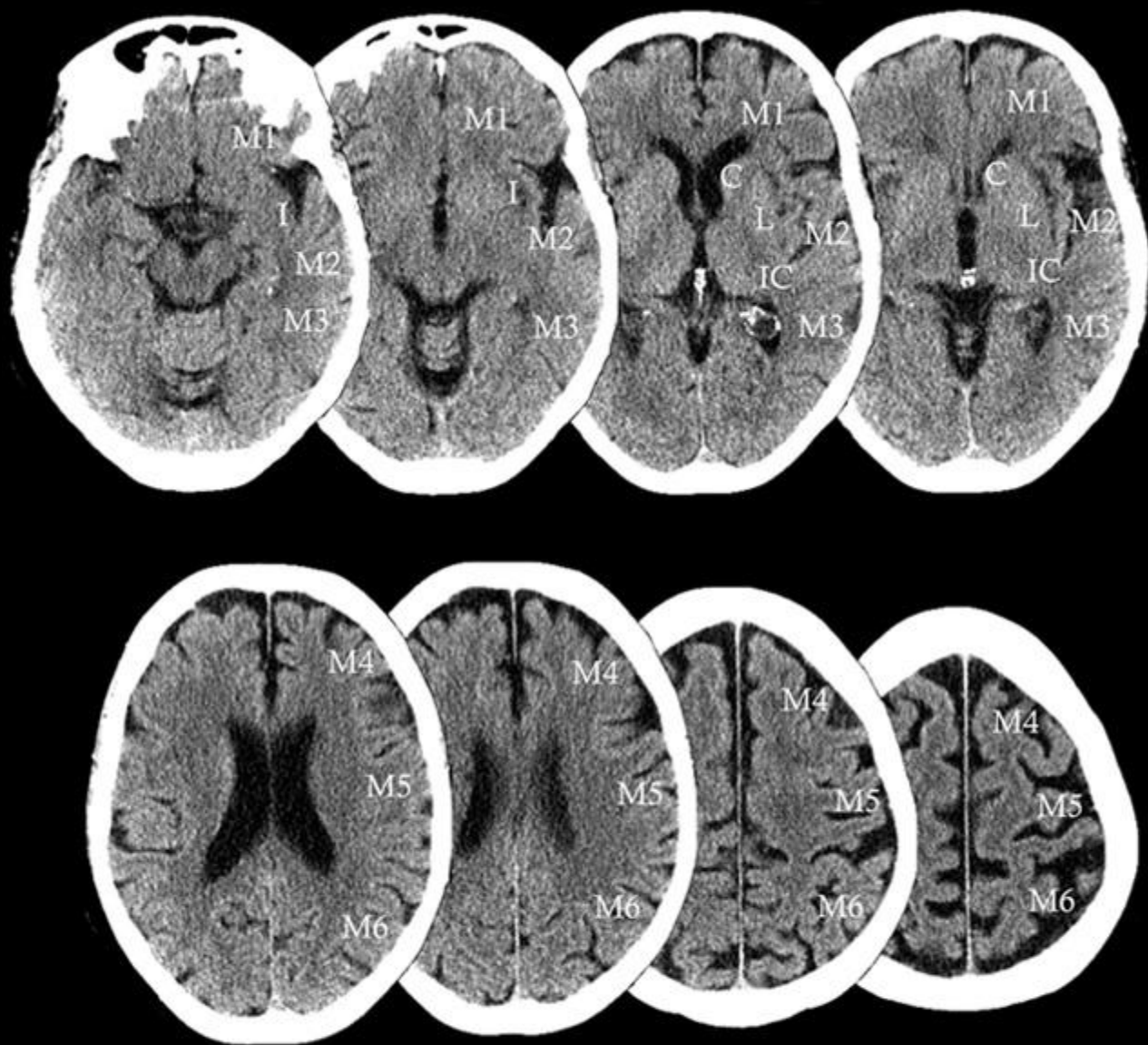


Corona radiata level



C: Caudate; IC: internal capsule; L: lentiform nucleus; I: Insular Cortex.





M1-6 + Caudate **L**entiform **I**nsula **IntC**apsule / 10