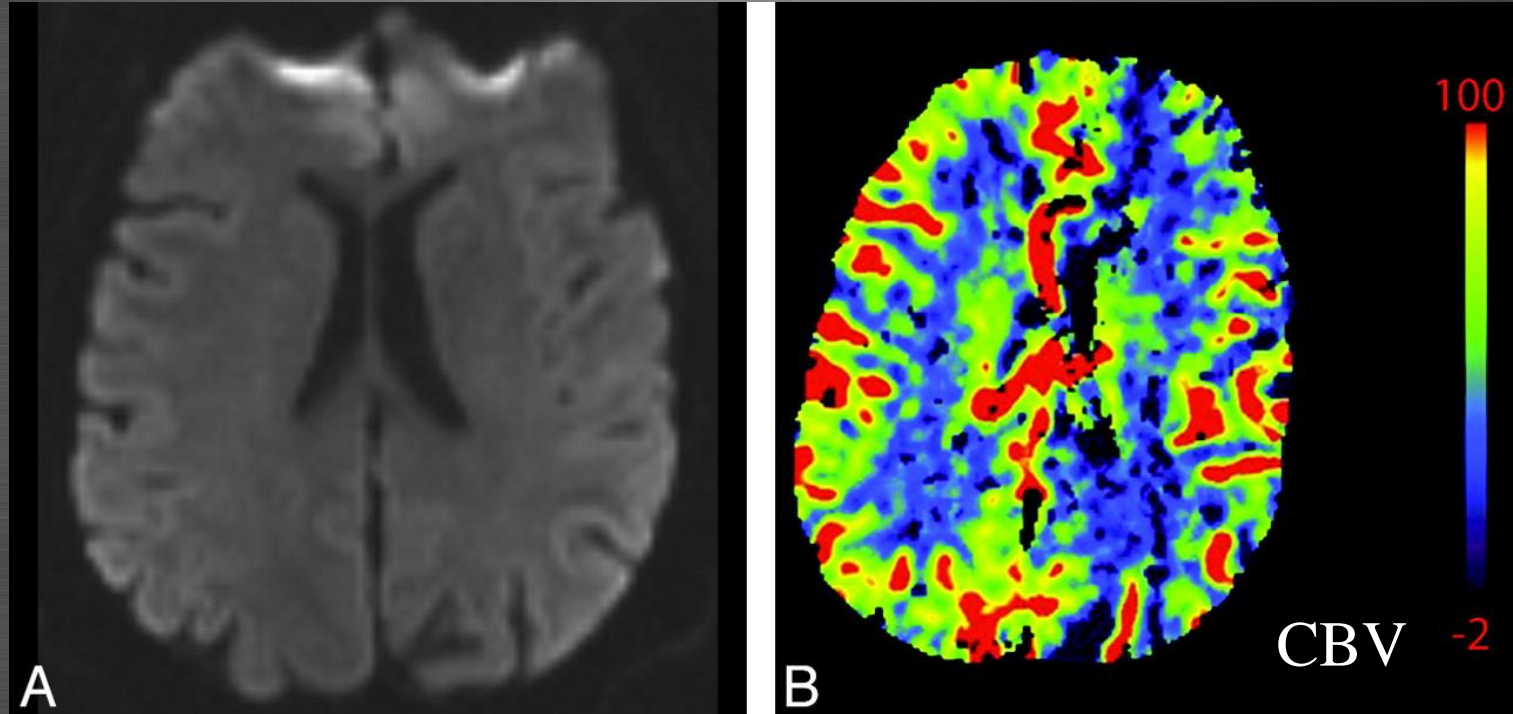


Seizure

- Seizure can be a clinical diagnostic dilemma because status epilepticus and postictal paralysis are both mimickers of acute stroke.
- To further complicate matters, seizure can be a presenting symptom of cortical stroke.
- CTP may show asymmetric perfusion with ictal areas of hyperperfusion. With visual interpretation of color maps, this pattern can be mistaken for contralateral areas of the

Seizure



CBV shows hypoperfusion in the left hemisphere, mimicking core infarct.

Electroencephalography and PET studies (not shown) later demonstrated a right hemispheric seizure focus, supporting CTP ictal hyperperfusion related to seizure rather than relative hypoperfusion related to left hemispheric infarct.

The patient's symptoms resolved.