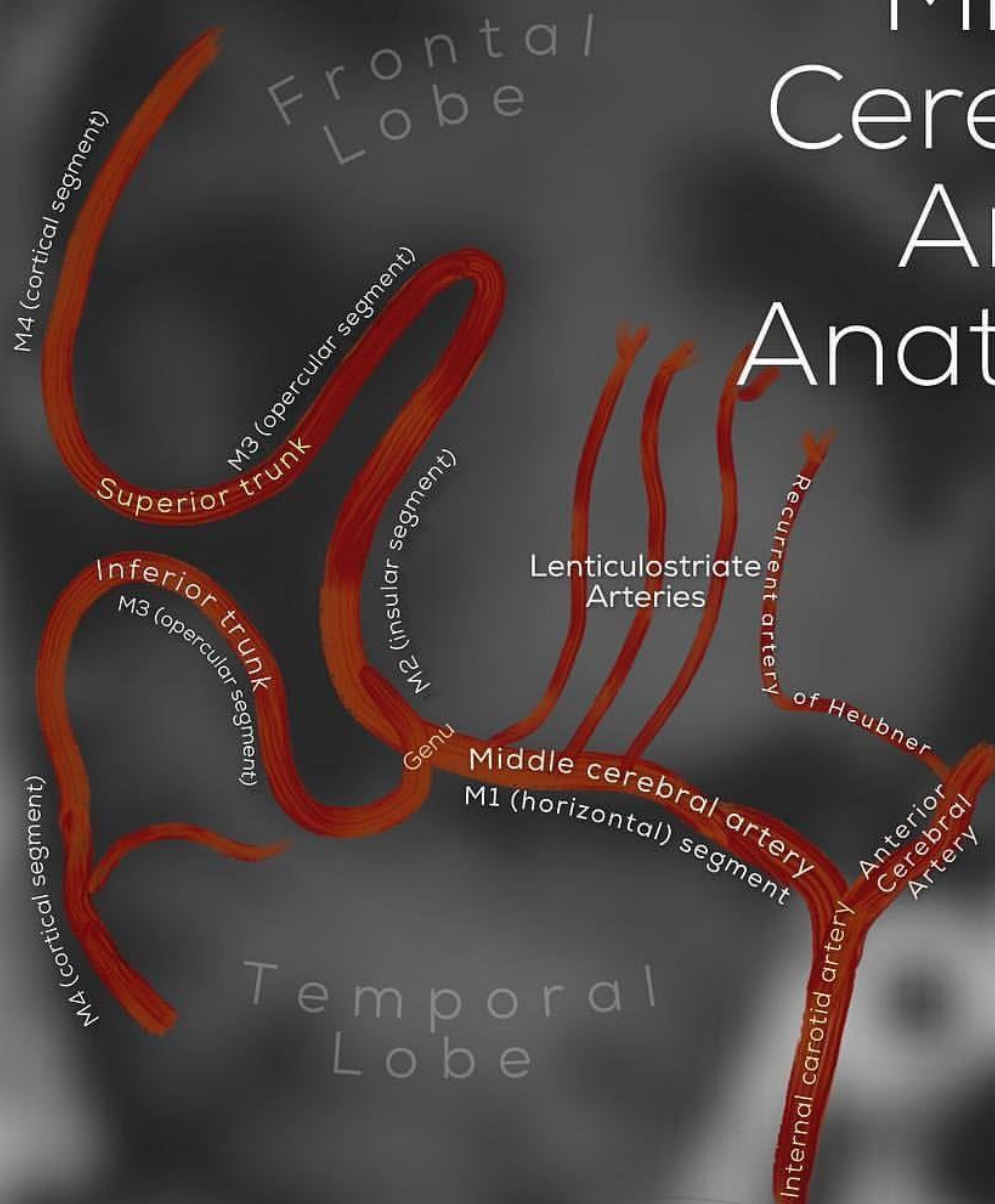


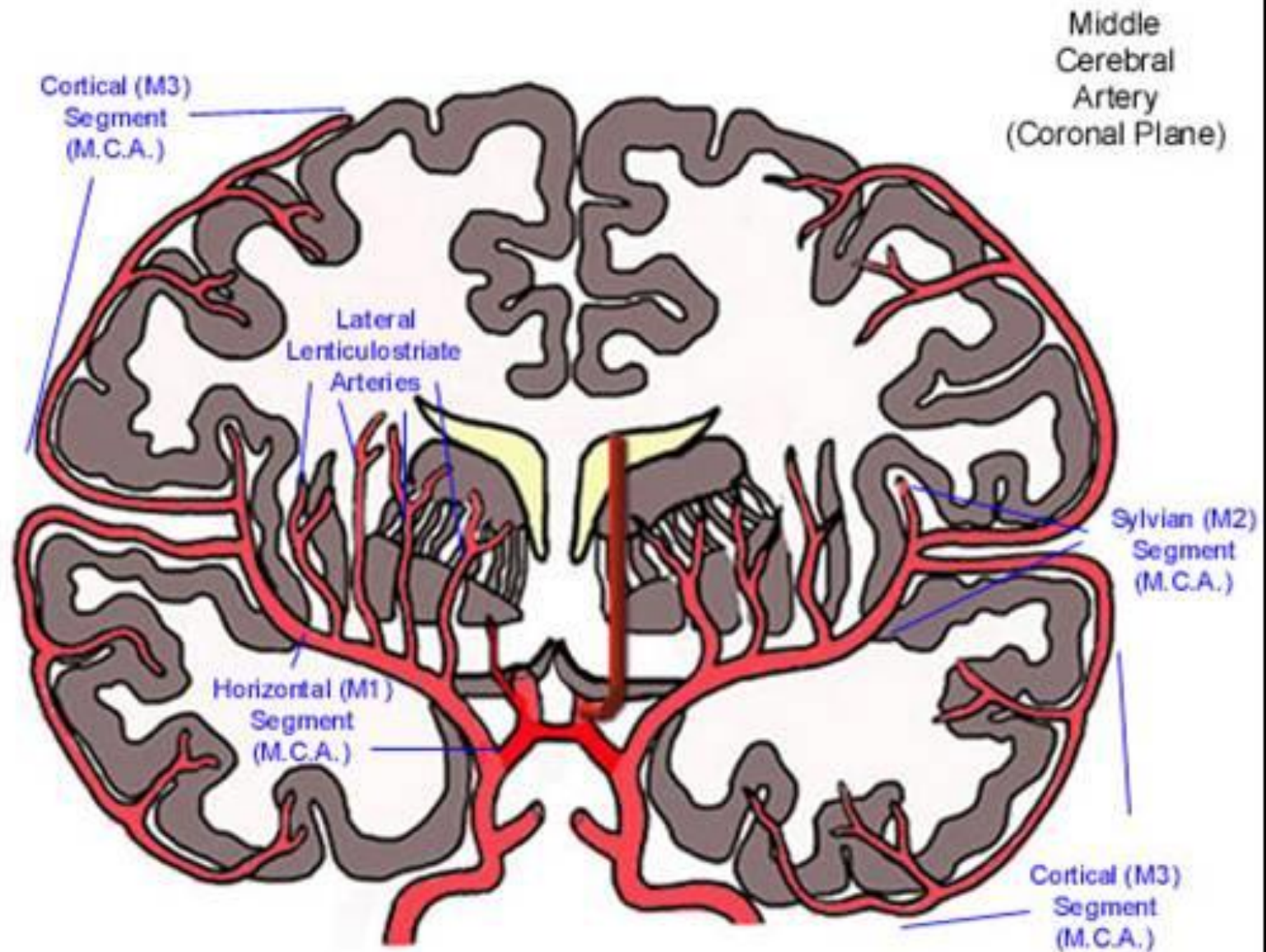
# Middle Cerebral Artery Anatomy



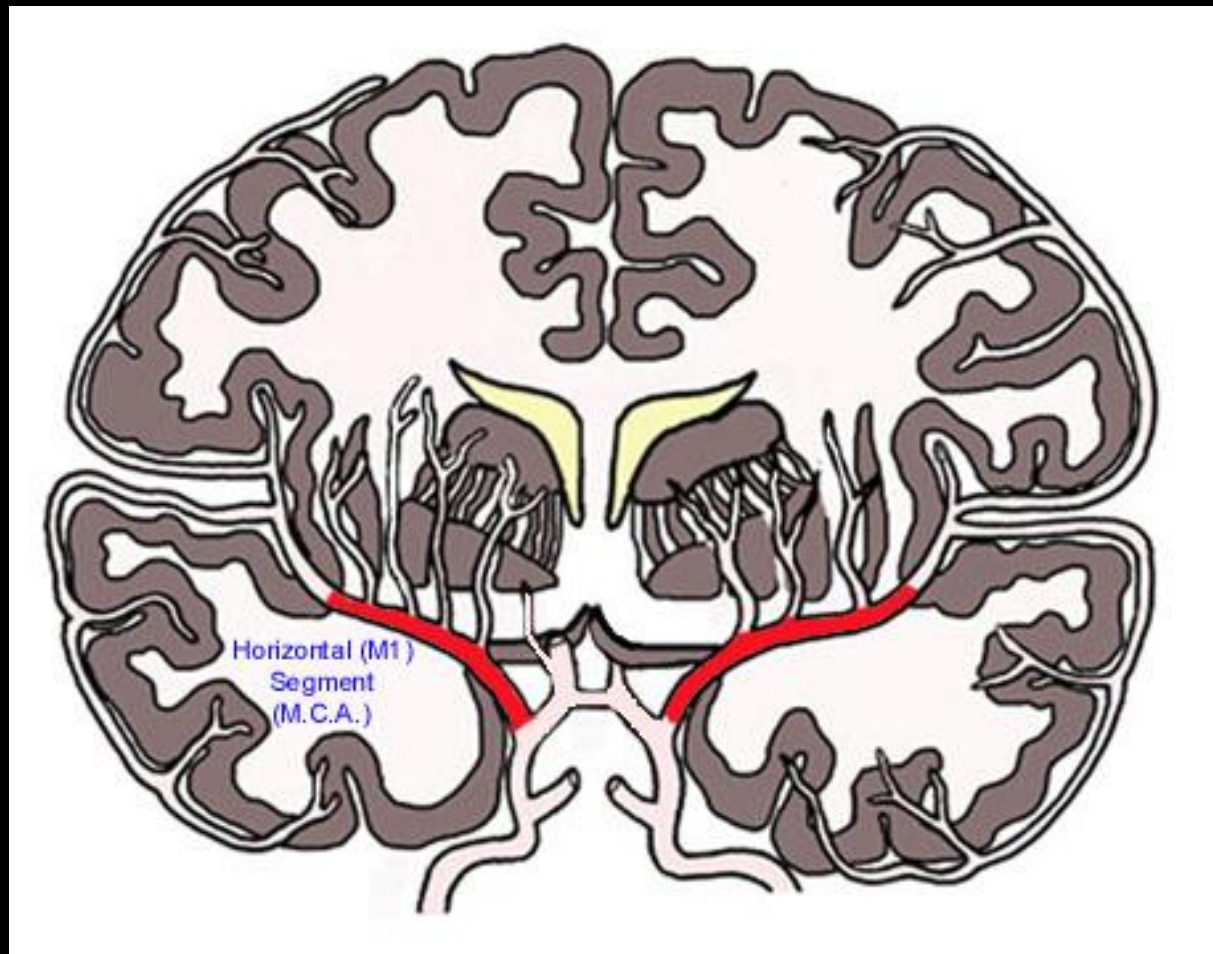
# Four segments

- **M1 -Horizontal segment**
  - Extends from terminal ICA bifurcation to sylvian fissure
  - Usually bi- or trifurcates just before sylvian fissure
  - Can be referred to as **Superior and inferior** or **anterior and posterior**
- **M2 - Insular segments**
  - Six to eight "stem" arteries arise from postbifurcation trunks, course superiorly within sylvian fissure, ramify over surface of insula
  - M2 segments end at top of sylvian fissure
- **M3- Opercular segments**
  - M3 segments begin at top of sylvian fissure, course inferolaterally through sylvian fissure
  - Exit sylvian fissure at surface of brain
- **M4 Cortical branches segments**
  - Exit sylvian fissure and ramify over lateral surface of hemisphere

# MCA

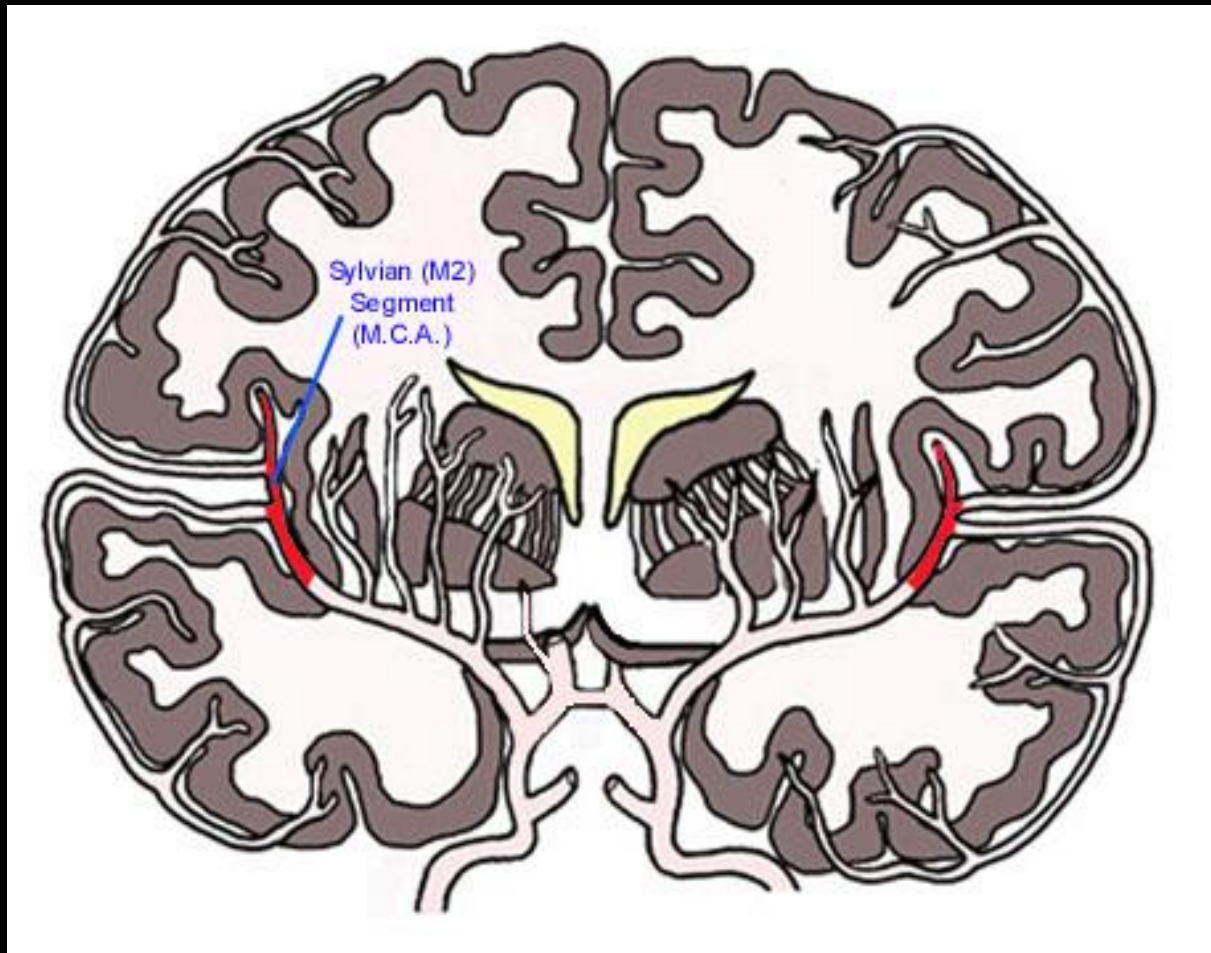


# M1





# M2



# M3

