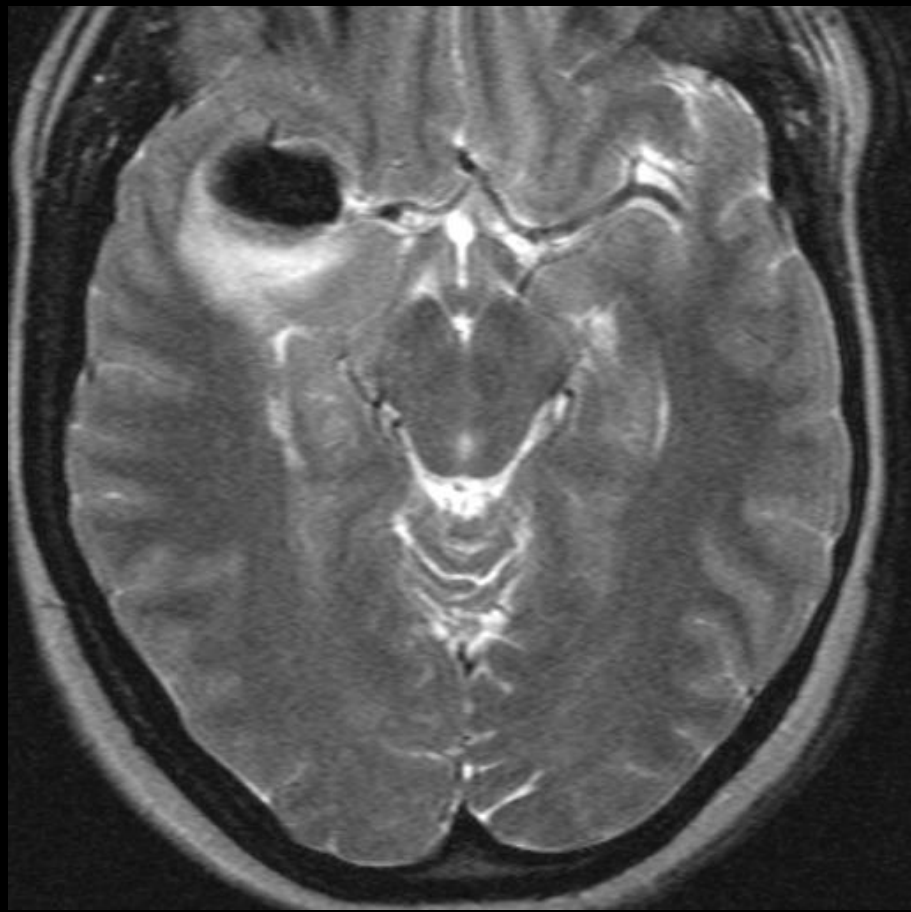
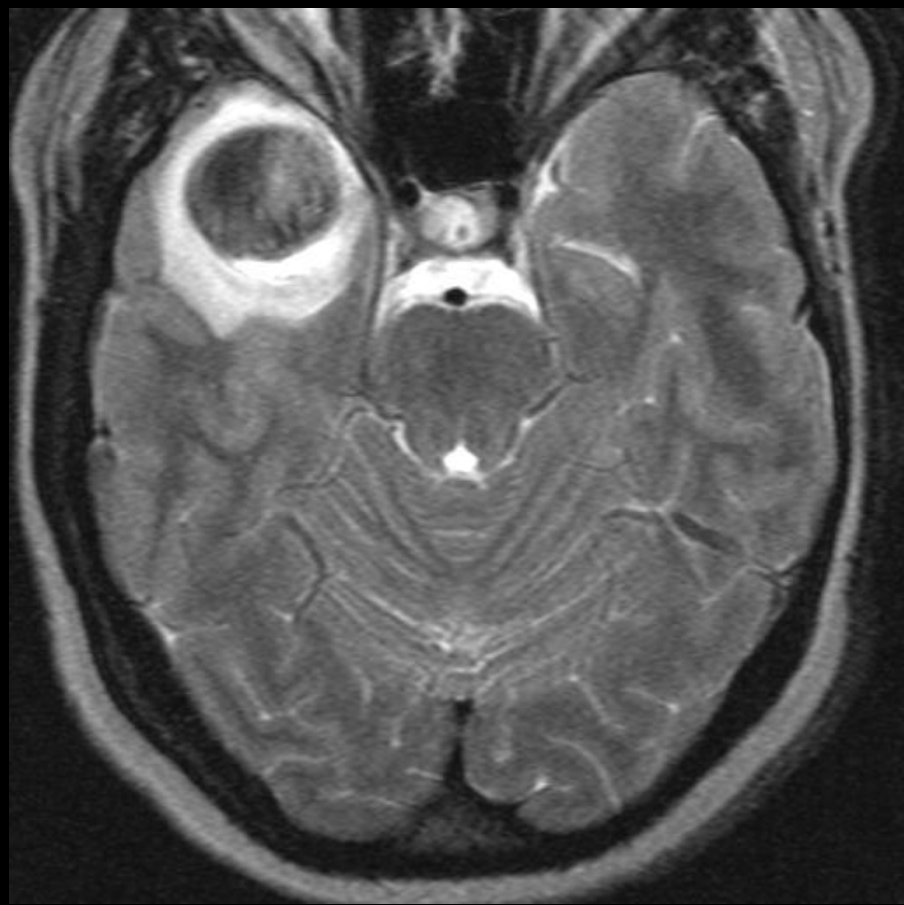
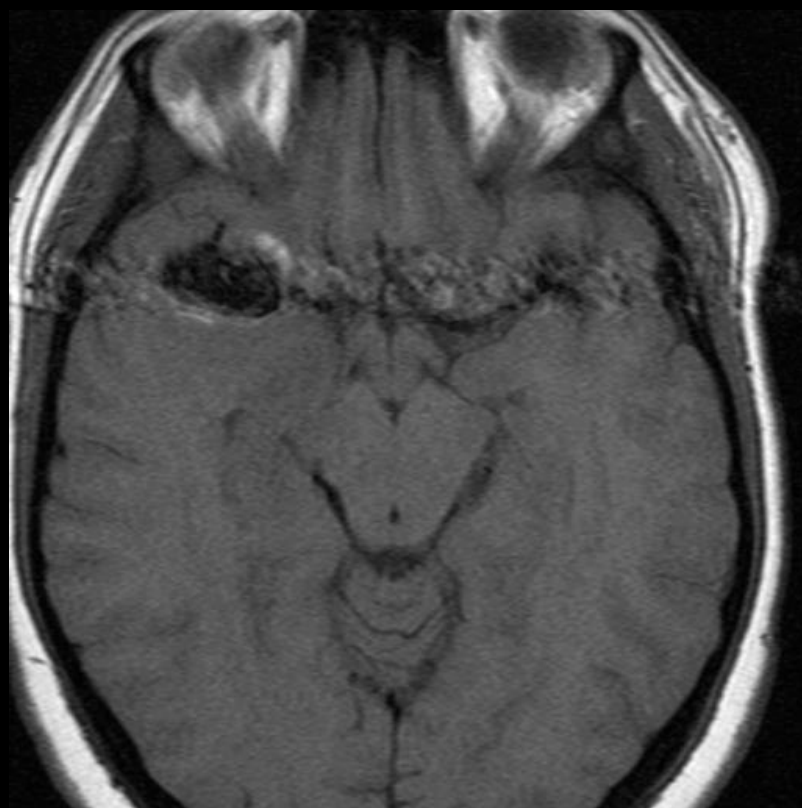


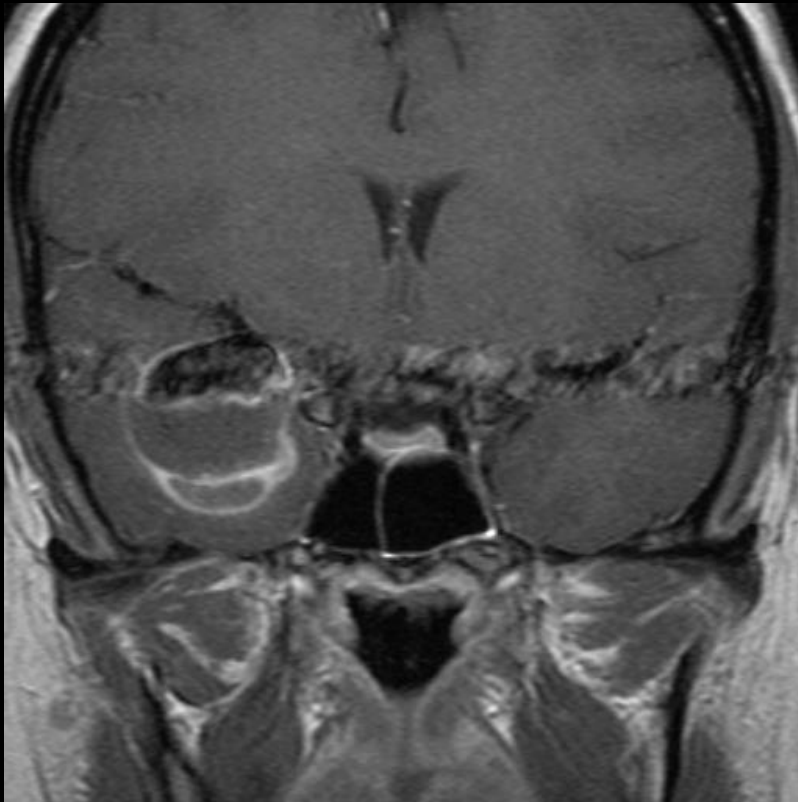
Giant MCA aneurysm, partially thrombosed

- Measure >25 mm in greatest dimension
- Occur in the 5th-7th decades and are more common in females.
- Most commonly represent saccular cerebral aneurysms but may also be fusiform or serpentine in morphology.
- They are thought to develop via two pathways :
 - internal elastic lamina *de novo* defect
 - enlargement from a smaller aneurysm





Giant MCA aneurysm, partially thrombosed



- Acomm, Pcomm, MCA bifurcation
- Complex si, enhancement pattern
- Phase or pulsation artifact
- Edema may be present, suggests partial thrombosis