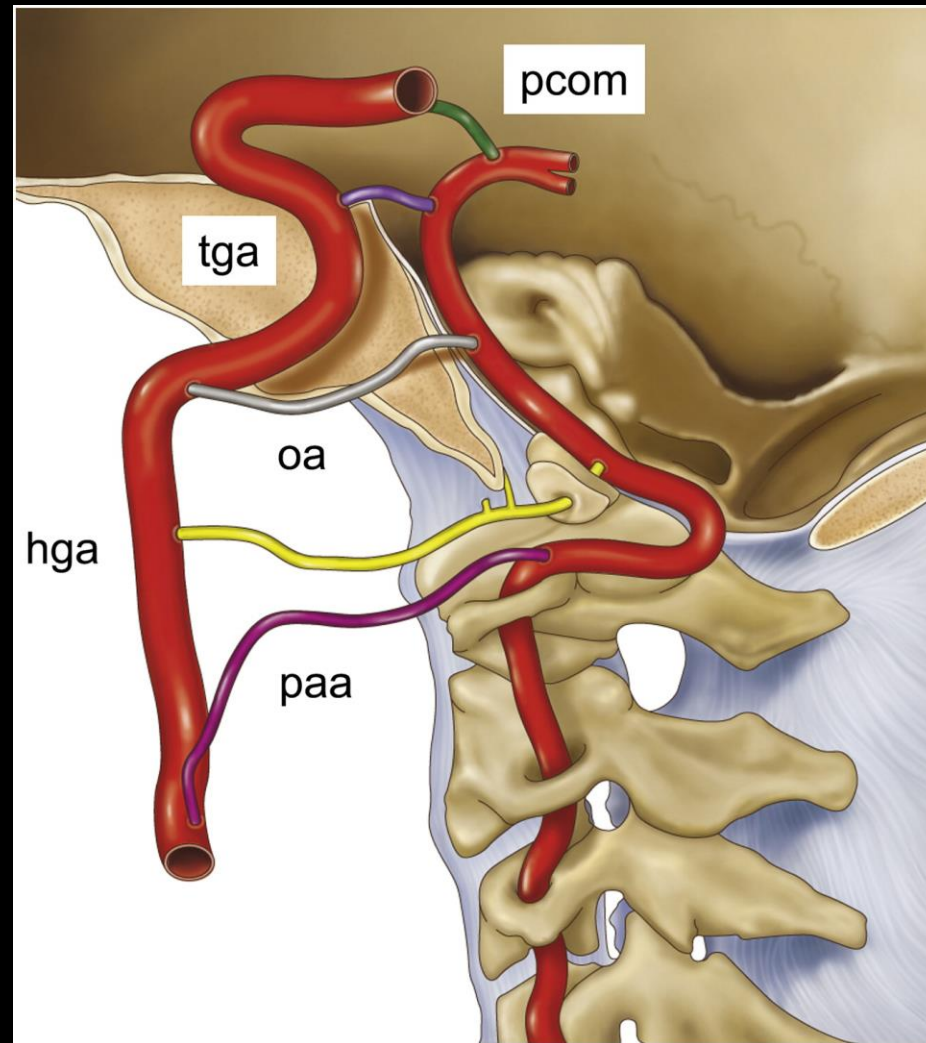
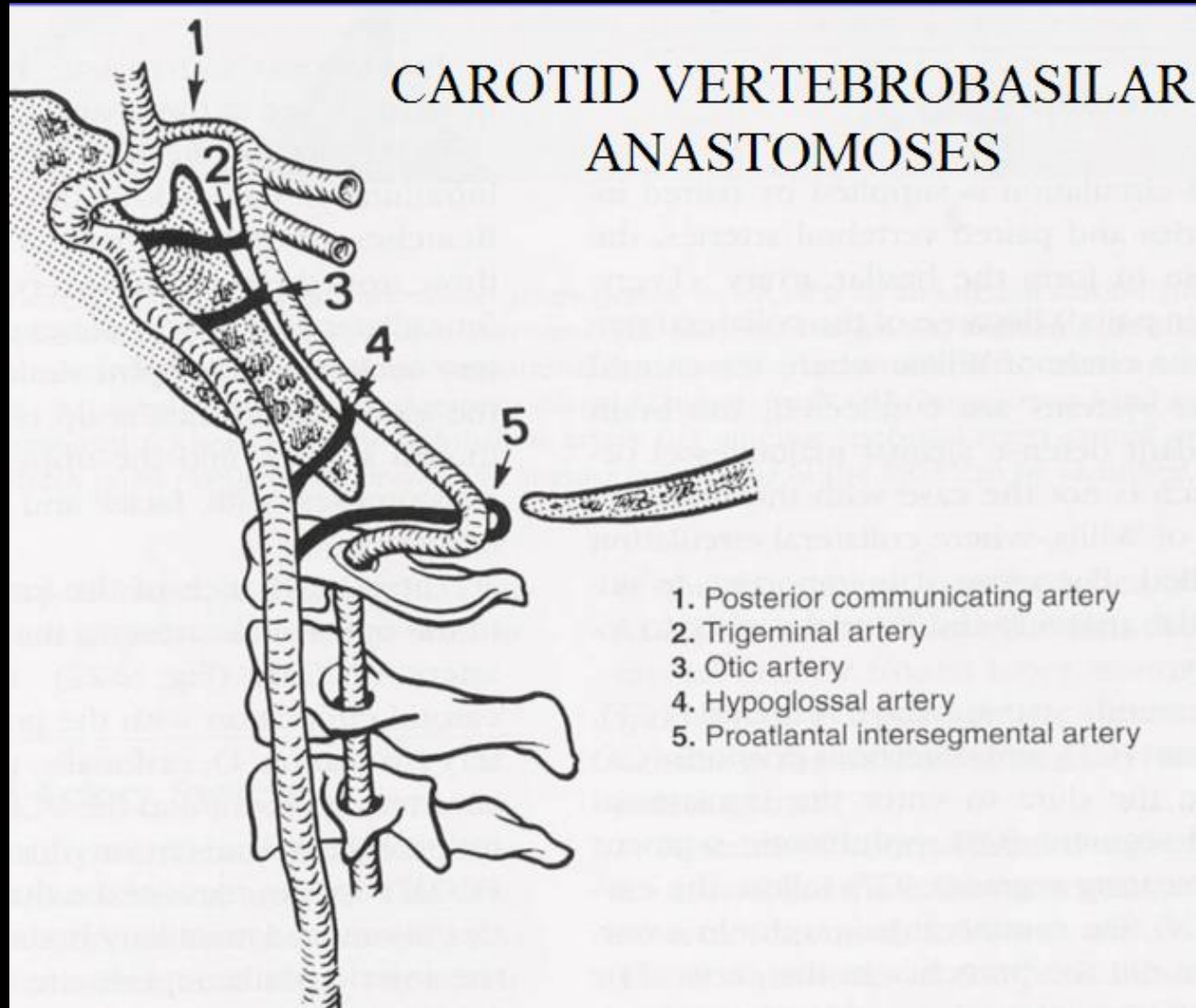


Carotid-basilar anastomoses in fetal life



Carotid-basilar anastomoses in fetal life



There are four carotid-basilar anastomoses in fetal life:

- Hypoglossal artery (2nd most common)
 - Petrous ICA to basilar artery
- Otic artery rare
 - Westman said may not exist may be persistent stapedial?
- Trigeminal artery (most Common)
 - Cavernous ICA to Basilar artery
- Proatlantal intersegmental artery
 - Cervical ICA to vertebral basilar system