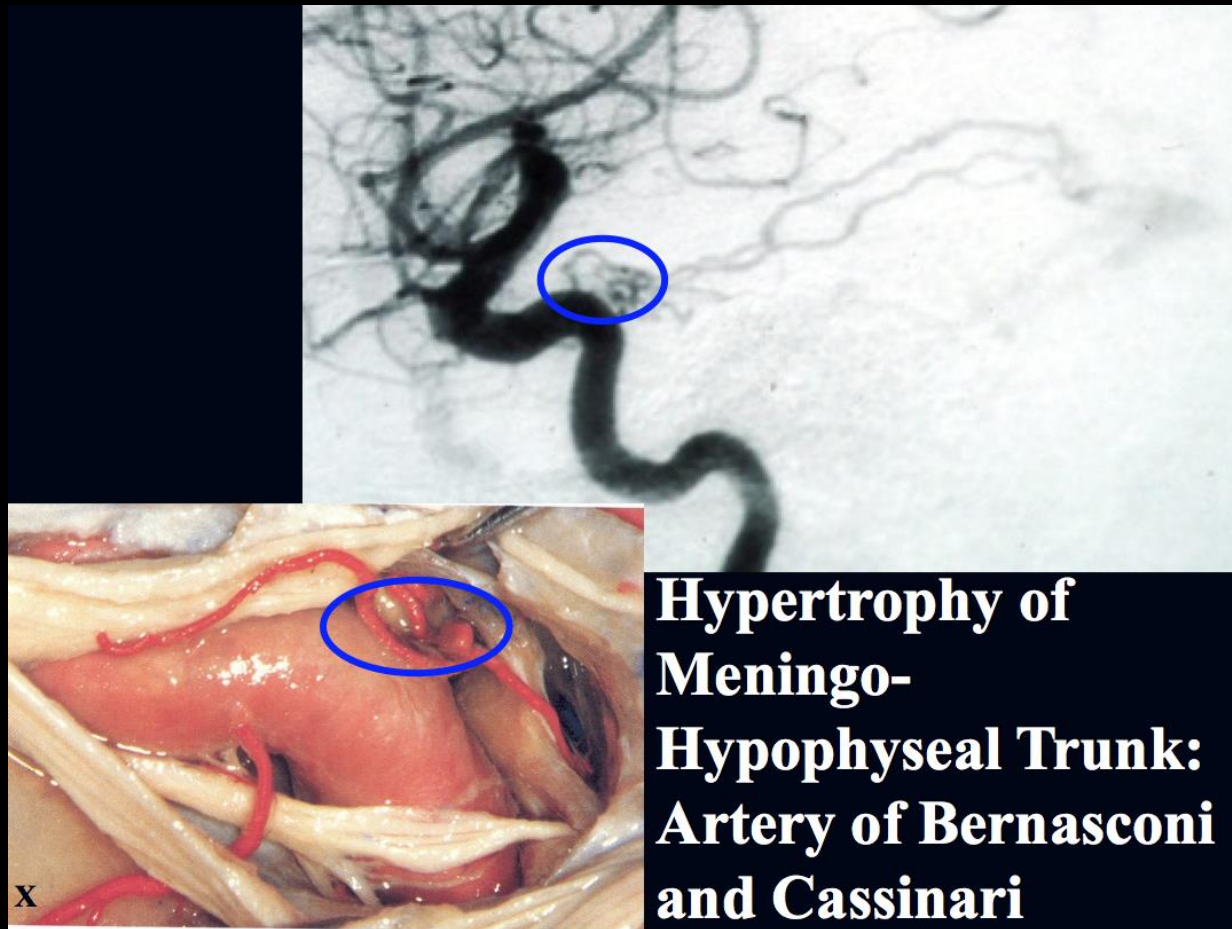


Artery of Bernasconi and Cassinari

- "tentorial artery" runs along tentorium
- first branch of meningohypophyseal trunk (branch from juxtaseal ICA)
- Typically do not see unless feeding pathology: can indicate pathology such as:
 - Meningioma
 - Fistula
 - AVM



**Hypertrophy of
Meningo-
Hypophyseal Trunk:
Artery of Bernasconi
and Cassinari**

Artery of Bernasconi and Cassinari

