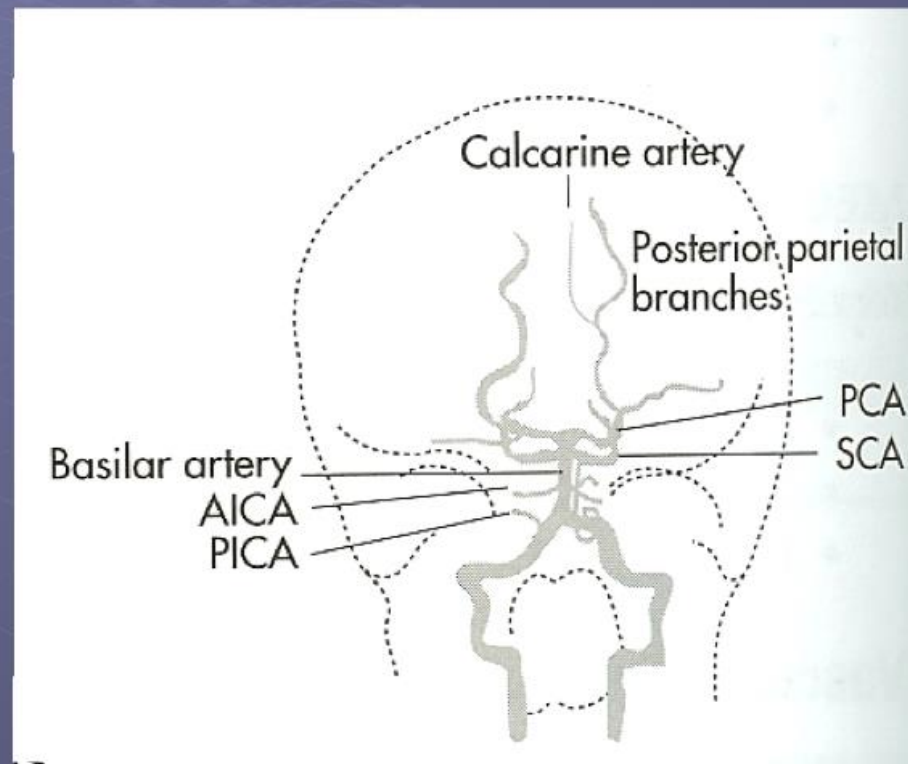


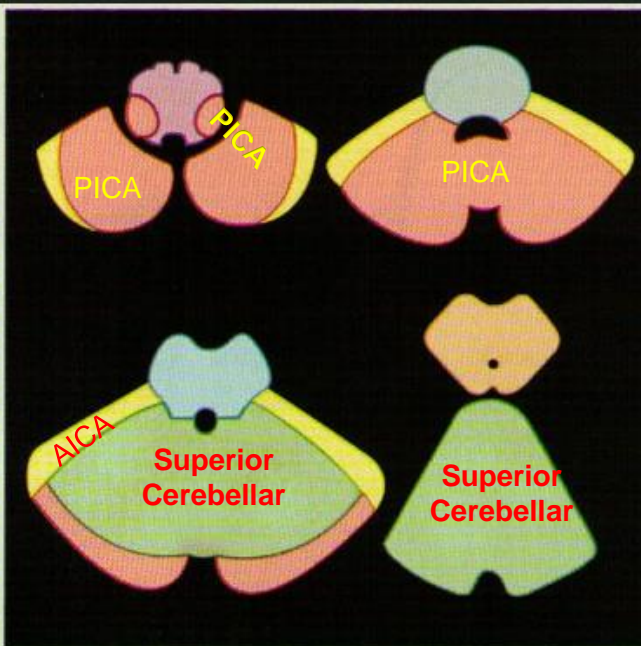
Basilar Artery

Anatomy



Basilar Artery

- Pica and Sup Cerebellar artery supply Most of cerebellum
- Aica very Little



Axial graphic shows posterior fossa vascular territories. Blue = pontine perforating arteries. Green = SCA. Yellow = AICA. Red = PICA. Purple = medullary perforating arteries.

