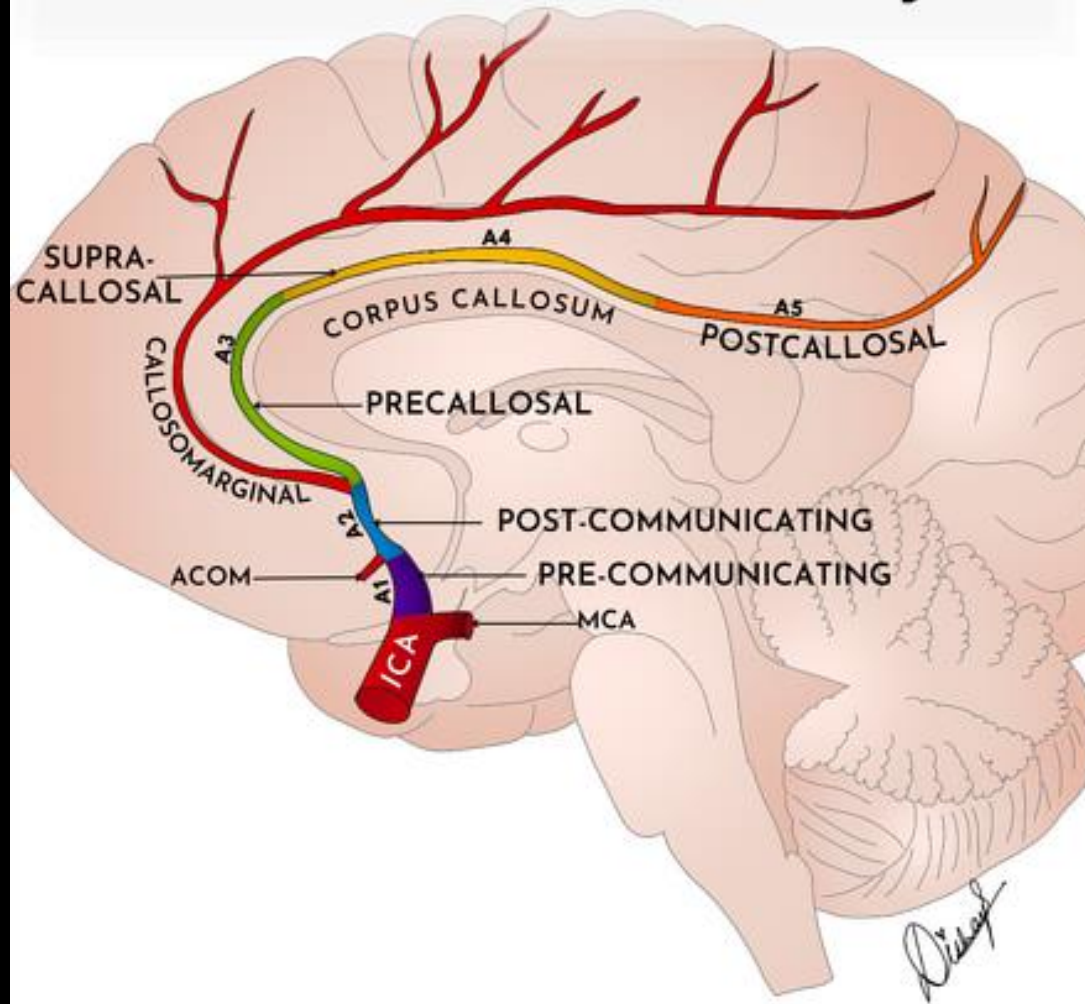
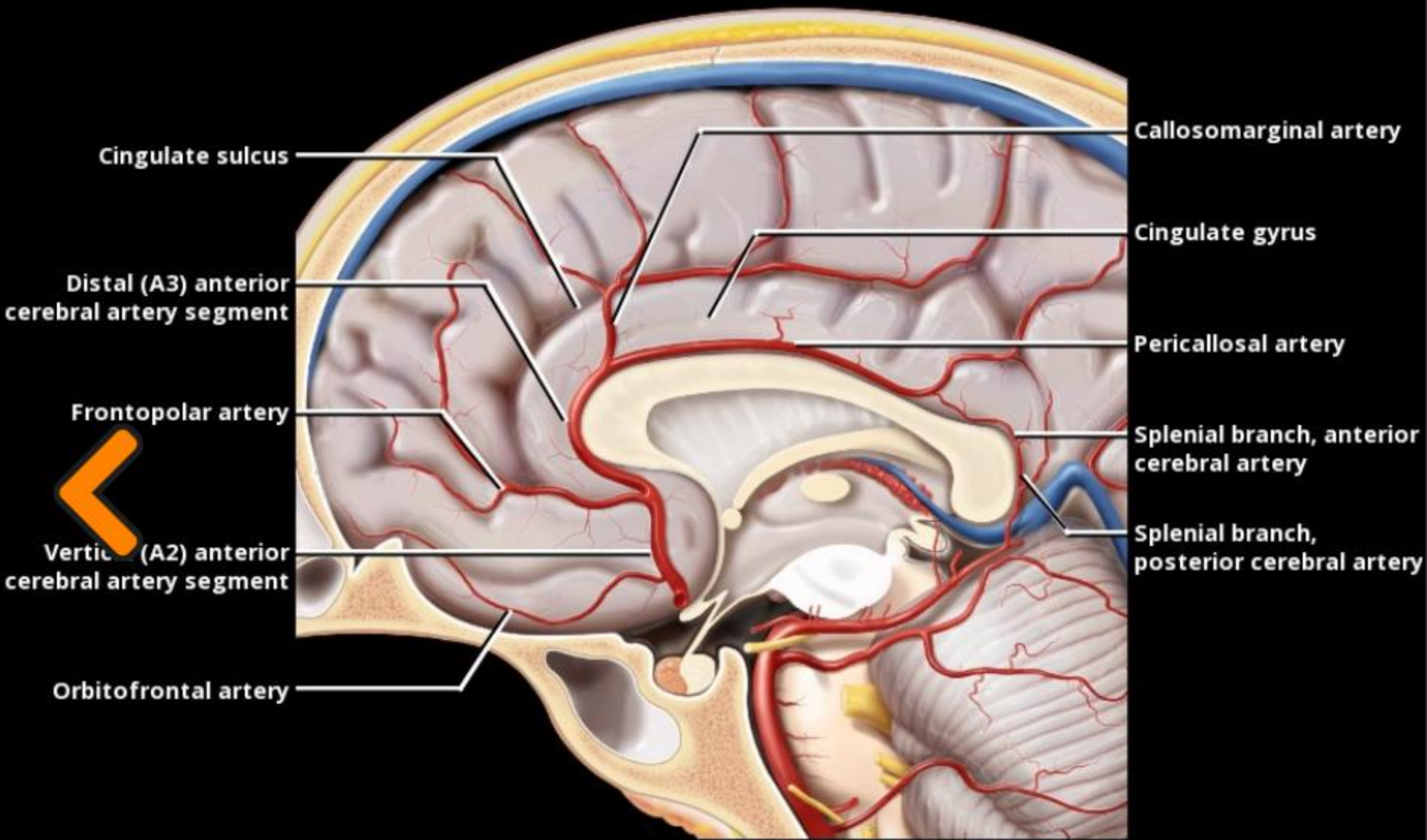


ACA

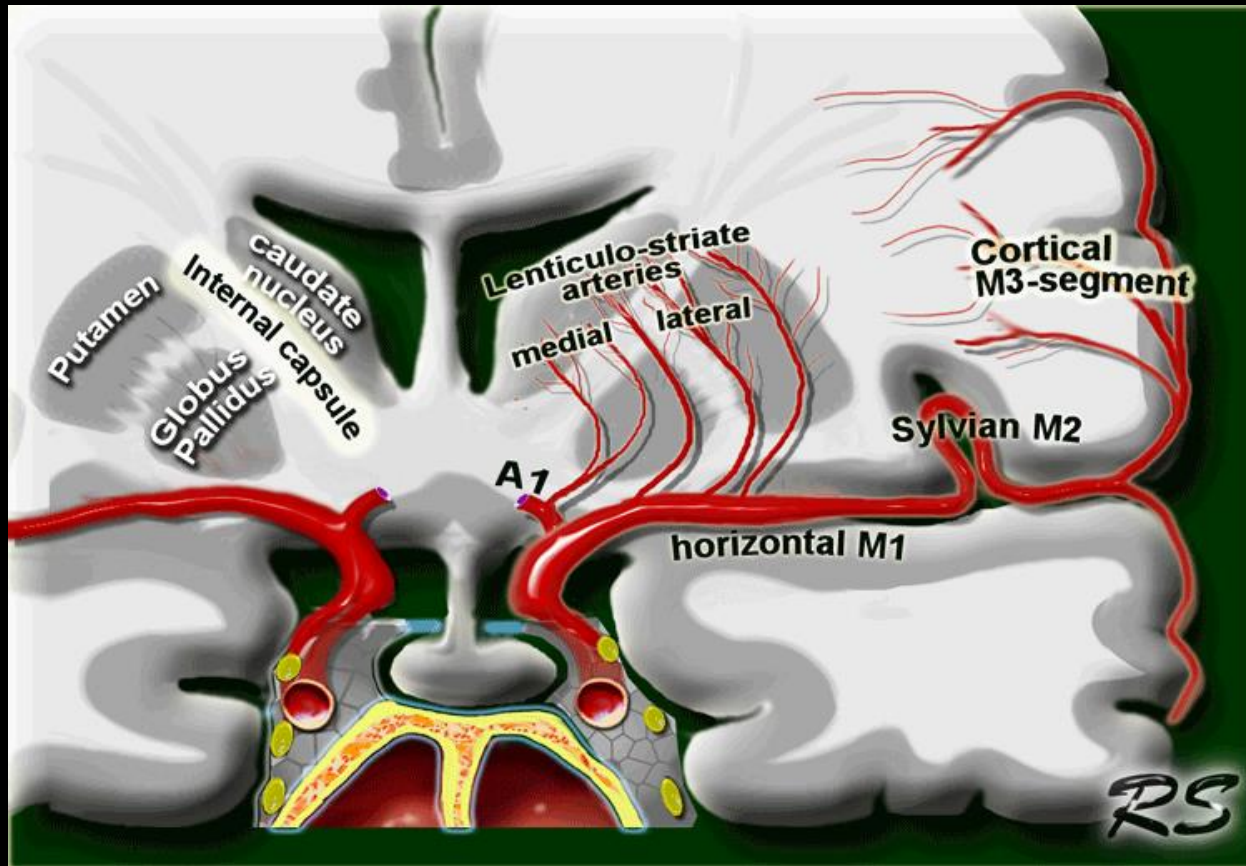
- **A1:** Extends medially over optic chiasm/nerves
- **A2:** Runs superiorly in interhemispheric fissure, anterior to corpus callosum rostrum
- **A3:** Curves around corpus callosum genu, divides into **pericallosal, callosomarginal arteries**
 - Pericallosal artery arises from A2 near corpus callosum genu
 - Larger of 2 major distal **ACA** branches
 - Courses posterosuperiorly above corpus callosum, **below** cingulate gyrus
 - Continues around corpus callosum splenium
 - Callosomarginal artery
 - Smaller of 2 distal **ACA** branches
 - Courses posterosuperiorly in cingulate sulcus, **above** cingulate gyrus
- **A4:** Most cortical arteries arise from pericallosal artery

Anterior cerebral artery





Lenticulo Striate



Recurrent artery of Heubner

- Also known as the **medial striate artery** or **long central artery**.
- The largest perforating branch from the proximal anterior cerebral artery (ACA) and is the only one routinely seen angiography.
- Supplying the inferior part of the head of the caudate nucleus and the anterior limb of the internal capsule.

