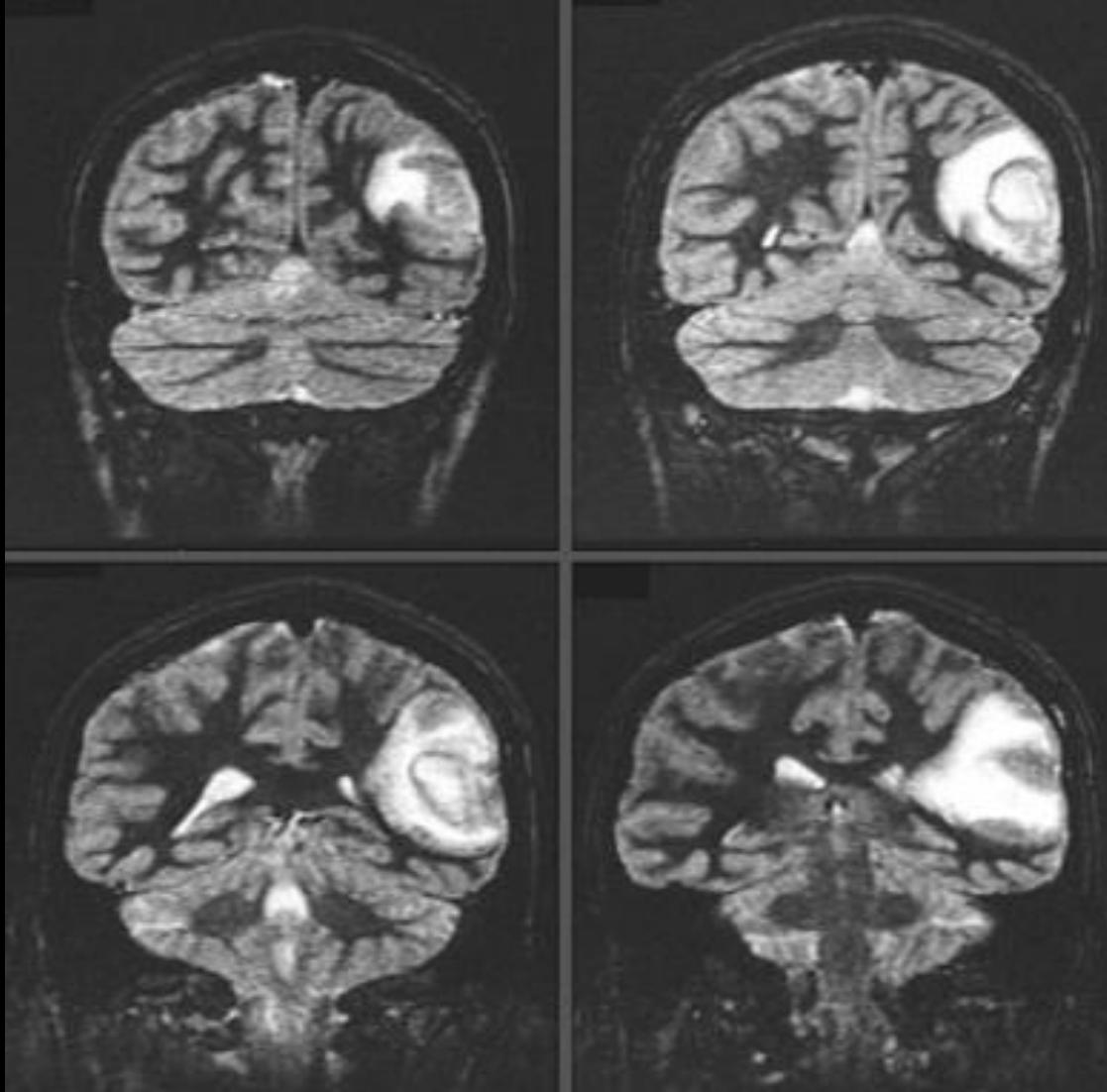


Abscess



DDX:

metastasis,
abscess,
glioblastoma multiforme
lymphoma,
resolving hemorrhage,
subacute infarction,
radiation necrosis,
rarely giant multiple
sclerosis plaques

Abscess

- Restricted diffusion centrally
- T2 dark capsule suggests abscess
- Thin capsule
- Thinner towards ventricle
- May rupture into ventricle