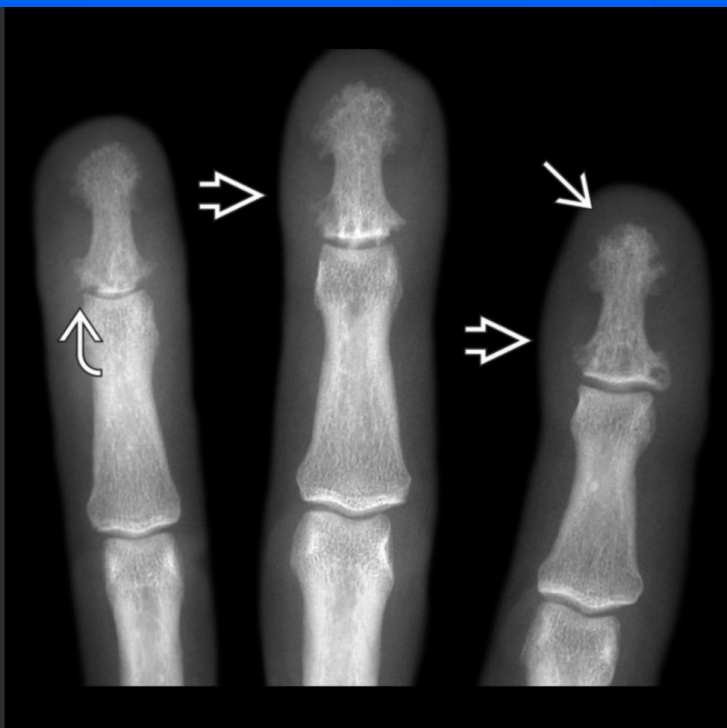


Multicentric Reticulohistiocytosis

- Synonym: **lipoid dermatoarthritis**
- Triad of chronic destructive polyarthritis, acroosteolysis, and soft tissue nodules.
- Proliferation of oncocytic histiocytes and multinucleated giant cells with eosinophilic cytoplasm.
- Rare disease where lipid-laden macrophages are deposited in soft-tissues and periarticular tendons, forming skin nodules and erosions with sclerotic margins.
- The well-defined erosions of multicentric reticulohistiocytosis tend to affect the **DIPs symmetrically**.
- Other radiographic findings of multicentric reticulohistiocytosis include **soft tissue nodules** and preserved bone density.
- Joint destruction may be rapid and progressive, producing an **arthritis mutilans** appearance.



[View Full Screen Image](#)

PA radiograph demonstrates acroosteolysis → as well as nodularity of the fingers ⇨. There are erosions at the DIP joints →.



[view full screen image](#)

PA radiograph shows acroosteolysis →. There are well-defined erosions predominantly in the IP joints →. Note the widened 2nd DIP. The combination of soft tissue nodularity, acroosteolysis, and erosions occurs in multicentric reticulohistiocytosis.



view full screen image

PA radiograph in the same patient shows acroosteolysis → as well as nodularity of the thumb ↷ and subtle interphalangeal (IP) erosions. The acroosteolysis and productive IP joint disease suggests psoriatic arthritis, but the nodularity is unusual for that disease. Multicentric reticulohistiocytosis was proven at biopsy.





