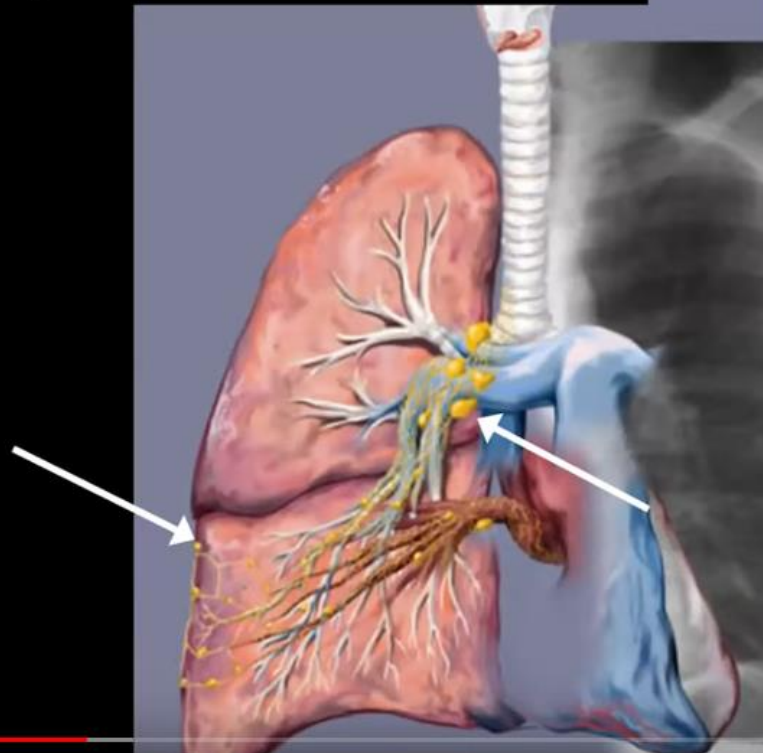


Perilymphatic

- Sarcoid!

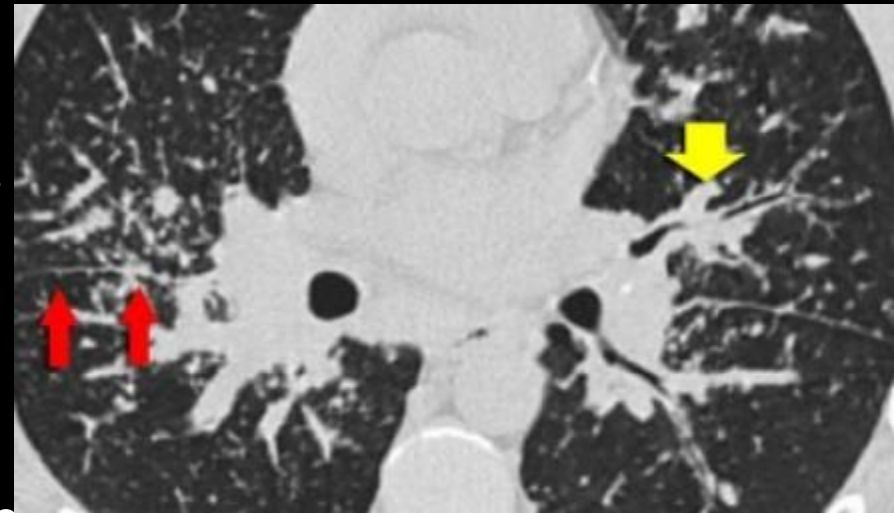
Lymphatic Distribution



AFIP

Sarcoidosis (perilymphatic distribution)

- Notice the nodules along the fissures indicating a perilymphatic distribution (red arrows).
- Always look carefully for these nodules in the subpleural region and along the fissures, because this finding is very specific for sarcoidosis.
- Typically in sarcoidosis is an upper lobe and perihilar predominance and in this case we see the majority of nodules located along the bronchovascular bundle (yellow arrow).



Sarcoid

