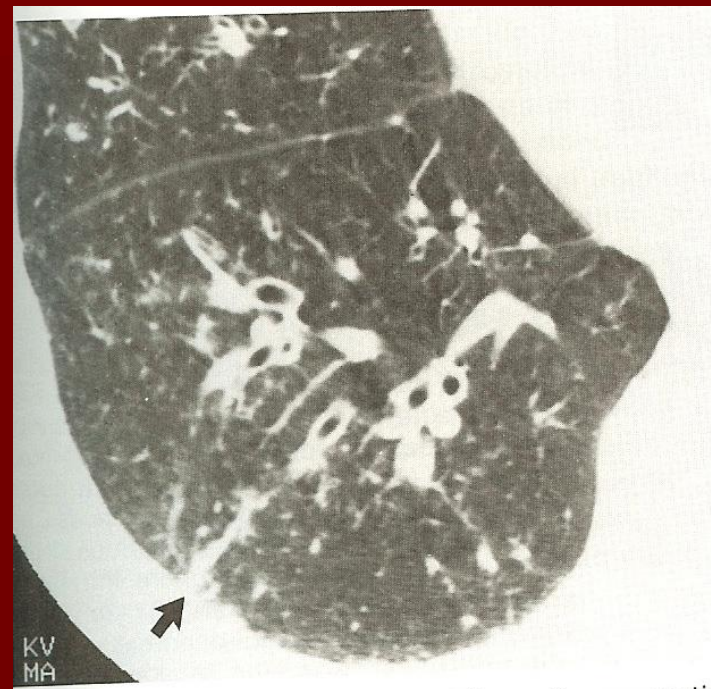


Parenchymal Bands

TABLE 3-3. *Differential diagnosis of parenchymal bands*

Diagnosis	Comments
Asbestosis	Multiple parenchymal bands common; associated with thickened pleura; septal thickening usually present
Sarcoidosis	Common, associated with septal thickening
Silicosis/Coal worker's pneumoconiosis	In association with PMF and emphysema
Tuberculosis	Associated with scarring



Commonly encountered among patients with asbestosis.

They are typically over 2 cm in length (up to 5cm), 1-3mm thick and run through the lung parenchyma and usually extend from a visceral pleural surface⁶. They are formed in a number of ways.

They are thought to reflect pleuroparenchymal fibrosis and is usually associated with distortion of the lung architecture.

Parenchymal bands

- Parenchymal bands are encountered in a wide range of pulmonary diseases and represent one of the many end-stage fibrotic findings.

